



🇬🇧 Halogen spot - 150 w / 1.800 Lumen  
- for many different exhibition systems.  
Choose between 3 different fittings for mounting.

🇩🇪 Halogen Spot - 150 W / 1.800 Lumen  
- für viele verschiedene Ausstellungs systeme. Wählen Sie zwischen 3 verschiedenen Beschlägen für Montage.

🇩🇰 Halogen spot - 150 w / 1.800 Lumen  
- som kan bruges til mange forskellige udstillingssystemer. Vælg mellem 3 forskellige monteringsbeslag.



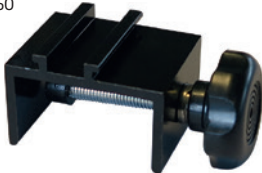
STANDARD FITTING  
FOR POP-UP WALL  
INCL.



OPTIONAL FITTING  
FOR CROWN TRUSS  
ART. 1542



OPTIONAL FITTING  
FOR OTHER SYSTEMS  
ART. 45150



Model	Art.no.	Product	Total size	Colour	Cable	Package size and weight	
740	4513	Spot (with fitting for Pop-up Wall incl.)	13,5 x 45 cm	Black	340 cm	6 x 15 x 50 cm	0,9 kg
742	1542	Fitting for CROWN Truss	16 x 5 x 4 cm	-		16 x 5 x 5 cm	0,1 kg
	45150	Fitting for 1 - 31 mm plates	6,5 x 3 x 3,5 cm	-			0,1 kg